

Christmas Mountain Village

Manager's Corner



CHRISTMAS MOUNTAIN VILLAGE

Special Points of Interest:

- New and improved activities at the Clubhouse on Channel 2
- Pavilion Rental - please call 608-254-3990 (first come-first served)
- Make sure to visit Mulligan's and enjoy the New Menu that was released in December.
- Golf Outings please contact Caleb at 608-254-3975
- Rental Packages available
- Christmas Mountain added 10 new TV Channels
- Christmas Mountain has improved the HI Speed Internet with a T1 line.
- Comedy will resume May 26 (purchase your tickets early)

Renovation Model Update:

The Associations Board of Director's are pleased to announce that the model units are now complete. With much hard work and cooperation from Christmas Mountain staff, the Management Company, local designers and contractors, we now have opened the model units to all owners for inspection, review and comments. The units will be open through the first Sunday in April. We encourage every owner to view the models and complete a short survey questionnaire that you will receive upon arrival. All unit types at Christmas Mountain Village have a model unit and these surveys- with your feedback - will be crucial for your Board in determining the final scope and cost to complete the necessary renovations. Your participation in this model exercise is an important step in the renovation planning process. Next steps will include assessing owner feedback, value engineering, determining final scope and costs, construction phasing and funding requirements planning.

We have provided a schedule below for you to come and see the renovated models. If you can't come in person, we have provided a link to our website that will display "before and after" photos of each unit type.

www.christmasmountainvillage.com

Renovation Model Schedule

Time/Day	Monday	Tuesday	Wednesday	Thursday	Friday	Saturday	Sunday
9:00 am - 10:15 am	817		806		59	232	516
10:20 - 11:35 am	516		817		806	47	232
11:40— 12:55 pm	232	Closed	516	Closed	817	59	47
1:00pm - 2:15 pm	47		232		516	806	59
2:20pm - 3:35 pm	59		47		232	817	806
3:40pm - 4:55 pm	806		59		47	516	817

Inside This Issue:

Manager's Corner	1
Renovation Model Schedule	1
Sample Renovation Pictures and Resort Story	2
Interval Calendar for 2011/2012	3
Message from the Board of Director's	4
Important Phone Numbers	5

Association	Campground	Villas	Timber
Unit #	Cottage 516	Cabin 232	Timber 59
		Villa 47	Deluxe
			Timber 806
			Townhouse
			817

Sample Model Renovation Pictures



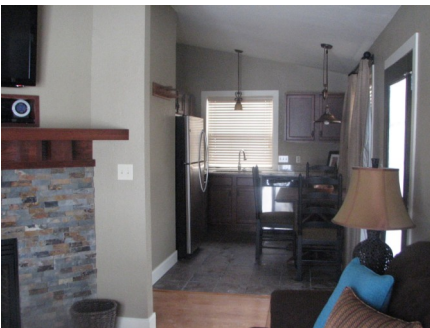
Exterior Cabin Model



Interior Cabin Model



Exterior Cottage Model



Interior Cottage Model



Exterior Deluxe Timber Model



Interior Deluxe Timber Model



Exterior Timber Model



Exterior Timber Model



Exterior Townhome Model



Exterior Townhome Model



Exterior Townhome Model



Interior Townhome Model

To view all Model pictures/presentation please visit

www.christmasmountainvillage.com

2011-2012 Interval Calendar

2011			
Week No.	Friday to Friday	Saturday to Saturday	Sunday to Sunday
1	Jan 7 - Jan 14	Jan 1 - Jan 8	Jan 2 - Jan 9
2	Jan 14 - Jan 21	Jan 8 - Jan 15	Jan 9 - Jan 16
3	Jan 21 - Jan 28	Jan 15 - Jan 22	Jan 16 - Jan 23
4	Jan 28 - Feb 4	Jan 22 - Jan 29	Jan 23 - Jan 30
5	Feb 4 - Feb 11	Jan 29 - Feb 5	Jan 30 - Feb 6
6	Feb 11 - Feb 18	Feb 5 - Feb 12	Feb 6 - Feb 13
7	Feb 18 - Feb 25	Feb 12 - Feb 19	Feb 13 - Feb 20
8	Feb 25 - Mar 4	Feb 19 - Feb 26	Feb 20 - Feb 27
9	Mar 4 - Mar 11	Feb 26 - Mar 5	Feb 27 - Mar 6
10	Mar 11 - Mar 18	Mar 5 - Mar 12	Mar 6 - Mar 13
11	Mar 18 - Mar 25	Mar 12 - Mar 19	Mar 13 - Mar 20
12	Mar 25 - Apr 1	Mar 19 - Mar 26	Mar 20 - Mar 27
13	Apr 1 - Apr 8	Mar 26 - Apr 2	Mar 27 - Apr 3
14	Apr 8 - Apr 15	Apr 2 - Apr 9	Apr 3 - Apr 10
15	Apr 15 - Apr 22	Apr 9 - Apr 16	Apr 10 - Apr 17
16	Apr 22 - Apr 29	Apr 16 - Apr 23	Apr 17 - Apr 24
17	Apr 29 - May 6	Apr 23 - Apr 30	Apr 24 - May 1
18	May 6 - May 13	Apr 30 - May 7	May 1 - May 8
19	May 13 - May 20	May 7 - May 14	May 8 - May 15
20	May 20 - May 27	May 14 - May 21	May 15 - May 22
21	May 27 - Jun 3	May 21 - May 28	May 22 - May 29
22	Jun 3 - Jun 10	May 28 - Jun 4	May 29 - Jun 5
23	Jun 10 - Jun 17	Jun 4 - Jun 11	Jun 5 - Jun 12
24	Jun 17 - Jun 24	Jun 11 - Jun 18	Jun 12 - Jun 19
25	Jun 24 - Jul 1	Jun 18 - Jun 25	Jun 19 - Jun 26
26	Jul 1 - Jul 8	Jun 25 - Jul 2	Jun 26 - Jul 3
27	Jul 8 - Jul 15	Jul 2 - Jul 9	Jul 3 - Jul 10
28	Jul 15 - Jul 22	Jul 9 - Jul 16	Jul 10 - Jul 17
29	Jul 22 - Jul 29	Jul 16 - Jul 23	Jul 17 - Jul 24
30	Jul 29 - Aug 5	Jul 23 - Jul 30	Jul 24 - Jul 31
31	Aug 5 - Aug 12	Jul 30 - Aug 6	Jul 31 - Aug 7
32	Aug 12 - Aug 19	Aug 6 - Aug 13	Aug 7 - Aug 14
33	Aug 19 - Aug 26	Aug 13 - Aug 20	Aug 14 - Aug 21
34	Aug 26 - Sep 2	Aug 20 - Aug 27	Aug 21 - Aug 28
35	Sep 2 - Sep 9	Aug 27 - Sep 3	Aug 28 - Sep 4
36	Sep 9 - Sep 16	Sep 3 - Sep 10	Sep 4 - Sep 11
37	Sep 16 - Sep 23	Sep 10 - Sep 17	Sep 11 - Sep 18
38	Sep 23 - Sep 30	Sep 17 - Sep 24	Sep 18 - Sep 25
39	Sep 30 - Oct 7	Sep 24 - Oct 1	Sep 25 - Oct 2
40	Oct 7 - Oct 14	Oct 1 - Oct 8	Oct 2 - Oct 9
41	Oct 14 - Oct 21	Oct 8 - Oct 15	Oct 9 - Oct 16
42	Oct 21 - Oct 28	Oct 15 - Oct 22	Oct 16 - Oct 23
43	Oct 28 - Nov 4	Oct 22 - Oct 29	Oct 23 - Oct 30
44	Nov 4 - Nov 11	Oct 29 - Nov 5	Oct 30 - Nov 6
45	Nov 11 - Nov 18	Nov 5 - Nov 12	Nov 6 - Nov 13
46	Nov 18 - Nov 25	Nov 12 - Nov 19	Nov 13 - Nov 20
47	Nov 25 - Dec 2	Nov 19 - Nov 26	Nov 20 - Nov 27
48	Dec 2 - Dec 9	Nov 26 - Dec 3	Nov 27 - Dec 4
49	Dec 9 - Dec 16	Dec 3 - Dec 10	Dec 4 - Dec 11
50	Dec 16 - Dec 23	Dec 10 - Dec 17	Dec 11 - Dec 18
51	Dec 23 - Dec 30	Dec 17 - Dec 24	Dec 18 - Dec 25
52	Dec 30 - Jan 6	Dec 24 - Dec 31	Dec 25 - Jan 1
53		Dec 31 - Jan 7	

2012			
Week No.	Friday to Friday	Saturday to Saturday	Sunday to Sunday
1	Jan 6 - Jan 13	Jan 7 - Jan 14	Jan 1 - Jan 8
2	Jan 13 - Jan 20	Jan 14 - Jan 21	Jan 8 - Jan 15
3	Jan 20 - Jan 27	Jan 21 - Jan 28	Jan 15 - Jan 22
4	Jan 27 - Feb 3	Jan 28 - Feb 4	Jan 22 - Jan 29
5	Feb 3 - Feb 10	Feb 4 - Feb 11	Jan 29 - Feb 5
6	Feb 10 - Feb 17	Feb 11 - Feb 18	Feb 5 - Feb 12
7	Feb 17 - Feb 24	Feb 18 - Feb 25	Feb 12 - Feb 19
8	Feb 24 - Mar 2	Feb 25 - Mar 3	Feb 19 - Feb 26
9	Mar 2 - Mar 9	Mar 3 - Mar 10	Feb 26 - Mar 4
10	Mar 9 - Mar 16	Mar 10 - Mar 17	Mar 4 - Mar 11
11	Mar 16 - Mar 23	Mar 17 - Mar 24	Mar 11 - Mar 18
12	Mar 23 - Mar 30	Mar 24 - Mar 31	Mar 18 - Mar 25
13	Mar 30 - Apr 6	Mar 31 - Apr 7	Mar 25 - Apr 1
14	Apr 6 - Apr 13	Apr 7 - Apr 14	Apr 1 - Apr 8
15	Apr 13 - Apr 20	Apr 14 - Apr 21	Apr 8 - Apr 15
16	Apr 20 - Apr 27	Apr 21 - Apr 28	Apr 15 - Apr 22
17	Apr 27 - May 4	Apr 28 - May 5	Apr 22 - Apr 29
18	May 4 - May 11	May 5 - May 12	Apr 29 - May 6
19	May 11 - May 18	May 12 - May 19	May 6 - May 13
20	May 18 - May 25	May 19 - May 26	May 13 - May 20
21	May 25 - Jun 1	May 26 - Jun 2	May 20 - May 27
22	Jun 1 - Jun 8	Jun 2 - Jun 9	May 27 - Jun 3
23	Jun 8 - Jun 15	Jun 9 - Jun 16	Jun 3 - Jun 10
24	Jun 15 - Jun 22	Jun 16 - Jun 23	Jun 10 - Jun 17
25	Jun 22 - Jun 29	Jun 23 - Jun 30	Jun 17 - Jun 24
26	Jun 29 - Jul 6	Jun 30 - Jul 7	Jun 24 - Jul 1
27	Jul 6 - Jul 13	Jul 7 - Jul 14	Jul 1 - Jul 8
28	Jul 13 - Jul 20	Jul 14 - Jul 21	Jul 8 - Jul 15
29	Jul 20 - Jul 27	Jul 21 - Jul 28	Jul 15 - Jul 22
30	Jul 27 - Aug 3	Jul 28 - Aug 4	Jul 22 - Jul 29
31	Aug 3 - Aug 10	Aug 4 - Aug 11	Jul 29 - Aug 5
32	Aug 10 - Aug 17	Aug 11 - Aug 18	Aug 5 - Aug 12
33	Aug 17 - Aug 24	Aug 18 - Aug 25	Aug 12 - Aug 19
34	Aug 24 - Aug 31	Aug 25 - Sep 1	Aug 19 - Aug 26
35	Aug 31 - Sep 7	Sep 1 - Sep 8	Aug 26 - Sep 2
36	Sep 7 - Sep 14	Sep 8 - Sep 15	Sep 2 - Sep 9
37	Sep 14 - Sep 21	Sep 15 - Sep 22	Sep 9 - Sep 16
38	Sep 21 - Sep 28	Sep 22 - Sep 29	Sep 16 - Sep 23
39	Sep 28 - Oct 5	Sep 29 - Oct 6	Sep 23 - Sep 30
40	Oct 5 - Oct 12	Oct 6 - Oct 13	Sep 30 - Oct 7
41	Oct 12 - Oct 19	Oct 13 - Oct 20	Oct 7 - Oct 14
42	Oct 19 - Oct 26	Oct 20 - Oct 27	Oct 14 - Oct 21
43	Oct 26 - Nov 2	Oct 27 - Nov 3	Oct 21 - Oct 28
44	Nov 2 - Nov 9	Nov 3 - Nov 10	Oct 28 - Nov 4
45	Nov 9 - Nov 16	Nov 10 - Nov 17	Nov 4 - Nov 11
46	Nov 16 - Nov 23	Nov 17 - Nov 24	Nov 11 - Nov 18
47	Nov 23 - Nov 30	Nov 24 - Dec 1	Nov 18 - Nov 25
48	Nov 30 - Dec 7	Dec 1 - Dec 8	Nov 25 - Dec 2
49	Dec 7 - Dec 14	Dec 8 - Dec 15	Dec 2 - Dec 9
50	Dec 14 - Dec 21	Dec 15 - Dec 22	Dec 9 - Dec 16
51	Dec 21 - Dec 28	Dec 22 - Dec 29	Dec 16 - Dec 23
52	Dec 28 - Jan 4	Dec 29 - Jan 5	Dec 23 - Dec 30
53			Dec 30 - Jan 6

Board of Directors Contact Information

POA Board of Directors contact information:

Villas Association-President Cas Kowalski: Email: hot4dot@comcast.net

Golf Estates Association-Director Ron Hedrich: Email dianehedrich@yahoo.com

Campground Association-Secretary/Treasurer Dennis Thurow: (C) 608-963-6070 or Email: thurow@charter.net

Timbers Association-Vice President Ray Nilles: Email: r.nilles@att.net

Bluegreen Corporation-Director Connie Dodd: Email: constancedodd@aol.com

Campground Board of Directors contact information:

President Dennis Thurow: (C) 608-963-6070 or Email: thurow@charter.net

Vice President Harry Pokorny: Email: hpokor@charter.net

Secretary/Treasurer Chris Myers: Email: Chris.Myers@bluegreencorp.com

Director Vonei White: Email Vonei.white@comcast.net

Director Connie Dodd: Email: constancedodd@aol.com

Timbers Board of Directors contact information:

President Ray Nilles: Email: r.nilles@att.net

Vice President Connie Dodd: constancedodd@aol.com

Secretary/Treasurer Chris Myers: Email: Chris.Myers@bluegreencorp.com

Villas Board of Directors contact information:

President Everett Wood: ewoody11@aol.com

Vice President Cas Kowalski: Email hot4dot@comcast.net

Secretary/Treasurer Chris Myers: Email: Chris.Myers@bluegreencorp.com

Director Connie Dodd: Email: constancedodd@aol.com

A message from the Board of Directors:

Effective January 1, 2011, the Association Bonus Time rate has increased by \$20 for each room type. The association BT rate is based on availability for walk-in's, stay over and last minute bookings. Please contact the resort directly at 608-253-1000, for rates and availability.

Future Meeting Dates for 2011

Annual Meetings

For meeting room location, please contact the resort directly at 608-253-1000 or visit their website at www.christmasmountainvillage.com

POA meeting will be held on Friday, April 1, 2011 at 6:00 PM (Central Time)

Campground meeting will be held on Saturday, April 2, 2011 at 9:00AM (Central Time)

Villas meeting will be held on Saturday, April 2, 2011 at 11:00AM (Central Time)

Timbers meeting will be held on Saturday, April 2, 2011 at 1:00PM (Central Time)

Christmas Mountain now offers stay and play packages:

Packages that are currently available are Golf, Ski, Comedy and Romance packages. To inquire about package availability and rates please contact Leslie Pogreba at leslie.pogreba@bluegreencorp.com or 608-254-3992.

Ski:

With the warm weather fast approaching the snow has begun melting. With that being said, it means our Ski season is coming to an end. We would like to thank everyone for another terrific year and we hope to see you on the slopes next season.

Golf:

The ski season is coming to a close which means it's time to think **spring** and **golfing**. The 2011 Golf Memberships are currently on sale at the Pro-Shop. To purchase your membership please contact Caleb Turbett at 608-254-3975 or stop by the Pro-Shop.

Christmas Mountain
4960 Conference Way North, Suite 100
Boca Raton, FL 33431

ADDRESS SERVICE REQUESTED

Bluegreen Corporation

www.bluegreenonline.com

Important Numbers

Christmas Mountain (main line).....	1-608-253-1000
Mulligan's Bar N' Grill.....	1-608-254-3977
Ski/Golf Shop.....	1-608-254-3971
Bluegreen Vacation Club Reservations.....	1-800-456-2582, Option 1
Maintenance Fee Collections (US & Canada).....	1-800-456-2582, Option 2
Mortgage Inquiries (US & Canada).....	1-800-456-2582, Option 2
Pinnacle Vacation's Resale's (US & Canada).....	1-800-485-5632
Pinnacle Vacation's Resale's (International).....	1-239-489-1995
Bluegreen Vacation Rentals.....	1-800-456-0009
Bluegreen Resorts Management.....	1-561-912-8000

Please submit all requests for
association information in

writing to:

The Fountains Resort
7111 Crossland Drive
Orlando, Fl. 32921

Attn: Linda Vazquez

Or Email:

Linda.Vazquez@bluegreencorp.com